

4 CARE

CARING FOR YOUR INSTALLATION



Following proper maintenance techniques will keep your stone, grout and tile looking like new. TileLab® sealers and cleaners are specifically and safely formulated for stone, tile or grout.

Sealing



SurfaceGard® Penetrating Sealer



Aim & Seal™ Grout Sealer



Protect your grout, tile and stone.



All Custom products are protected by MoldGard Technology, ensuring the tile installation has the highest level of protection against mold and mildew.



Contributes to "Leadership in Energy and Environmental Design" Certification

Register Your Warranty at www.custombuildingproducts.com

For more details, please call 800-272-8786 or visit www.custombuildingproducts.com



Custom Building Products
Surrey, B.C. Canada V3W 3G1
Seal Beach, CA 90740 U.S.A.
800-272-8786
www.custombuildingproducts.com

Install Tile & Stone With A Lifetime Warranty



Lifetime Warranty – It's as easy as 1 2 3!

1 PREP

Preparing Your Surface

2 SET

Setting the Tile

3 GROUT

Grouting the Tile Joints



PROJECT CHECKLIST INSIDE



With EasyBoard®

1 PREP



1ST STEP
to a
Lifetime
Warranty

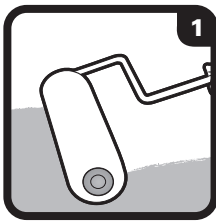
PREPARING THE SURFACE

Preparing the existing surface is the most critical task of any tile or stone installation. The tile must be placed on a rigid, level, structurally-sound surface to avoid problems. The surface should always be clean, dry and free of contaminants that could prevent a good bond.



For Concrete

RedGuard®
Waterproofing and
Crack Prevention
Membrane



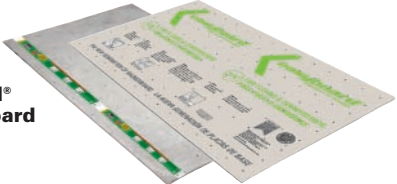
Roll on RedGuard.

COVERAGE

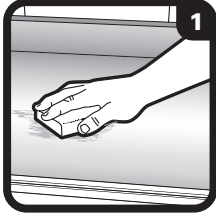
	SIZE	COVERAGE
For Crack Prevention	3.78 L (1 U.S. gallon)	10.2 m ² (110 sq. ft.)
For Waterproofing	3.78 L (1 U.S. gallon)	2.8 - 3.7 m ² (30 - 40 sq. ft.)

For Floors & Countertops

1/4" WonderBoard®
Cement Backerboard
1/4" EasyBoard®
Backerboard



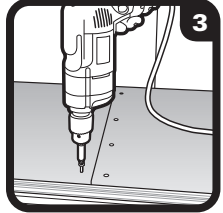
EasyMat™
with **SoundGard®**
Technology
where available



For countertops only – clean then lightly sand.



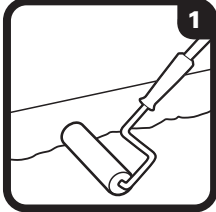
Apply **MegaLite** to floor or countertop.



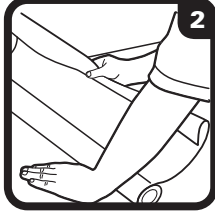
Fasten **WonderBoard** or **EasyBoard**.

COVERAGE

	SIZE	COVERAGE
1/4" WonderBoard	91 x 153 x 6 mm (36" x 60" x 1/4")	1.4 m ² (15 sq. ft.)
1/4" EasyBoard	91 x 153 x 6 mm (36" x 60" x 1/4")	1.4 m ² (15 sq. ft.)
EasyMat	1.2 x 25.4 m x 5 mm (48" x 10' x 5 mm)	3.7 m ² (40 sq. ft.)



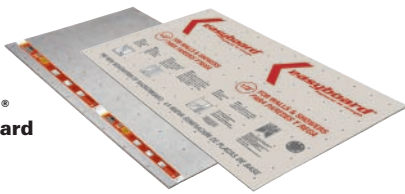
Apply primer.



Roll out **EasyMat**.

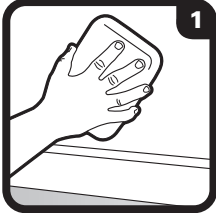
For Walls & Showers

1/2" WonderBoard®
Cement Backerboard
1/2" EasyBoard®
Backerboard

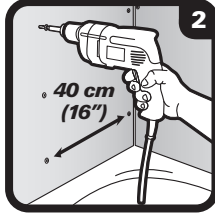


COVERAGE

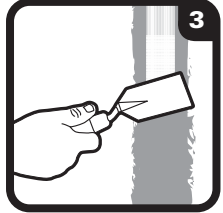
	SIZE	COVERAGE
1/2" WonderBoard	91 x 153 x 13 mm (36" x 60" x 1/2")	1.4 m ² (15 sq. ft.)
1/2" EasyBoard	91 x 153 x 13 mm (36" x 60" x 1/2")	1.4 m ² (15 sq. ft.)



For bathtub walls, staple roofing felt. For walls in dry areas, clean wall.



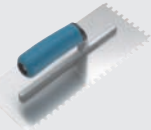
Fasten **WonderBoard** or **EasyBoard** to studs.



Fill gaps with **MegaLite**, embed mesh tape, smooth with trowel.

BASIC TOOLS FOR SURFACE PREP

Notch Trowel



Knee Pads



Scoring Knife



Backerboard Screws



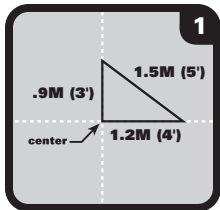
MEASURING AND LAYING OUT TILE

CUTTING THE TILE

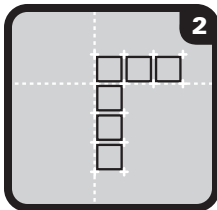
For professional results use SuperiorBilt® Tools.



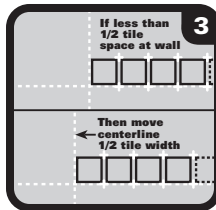
For Floors



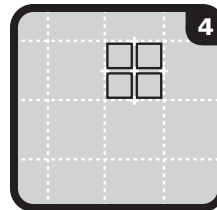
Mark centerlines of the floor. Use a 3-4-5 triangle to check for square.



Do a dry run to determine tile placement and cuts. Place a row of tiles along each line using spacers.

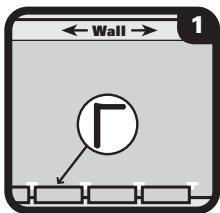


If the space at the wall is less than 1/2 tile, shift centerline to eliminate small cuts. This will allow wider tiles at both walls.

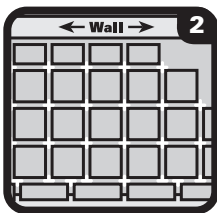


Work in chalked grids (typically 2 tiles by 2 tiles) allowing space for grout joints.

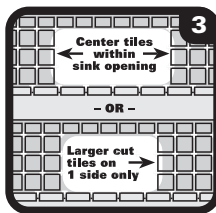
For Countertops



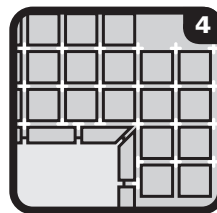
Begin layout by positioning the front edge tiles (bullnose or v-cap) along the front of the countertop.



Do a dry run by placing as many full tiles on the countertop with spacers as necessary. If countertop abuts a wall, lay cut tiles against the wall.

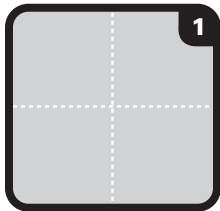


For straight countertops, mark centerline of countertop or sink, then lay tiles so cut pieces beside sink are the same width. Avoid less than half-width cut tiles by shifting the layout 1/2 tile left or right.

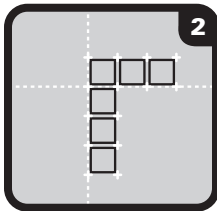


For L-shaped countertops, lay full tiles at inside corner. Set bullnose or v-cap pieces in place to ensure correct amount of overhanging pieces.

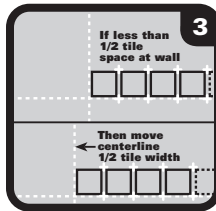
For Walls & Showers



Mark centerlines of the wall with a china marker.

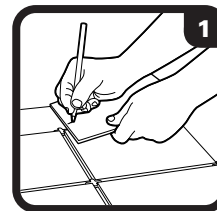


To determine tile placement and cuts, lay it out on the floor first, placing a row of tiles along each line using spacers. Then replicate the measurements on the wall.

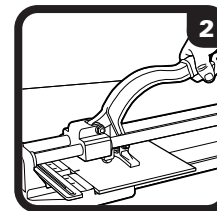


If the space at the wall end is less than 1/2 tile, shift centerline to eliminate small cuts. This will allow wide, even tiles at both edges.

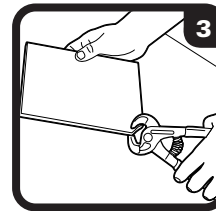
For Cutting Tile



After setting your full tiles, go back to set tiles requiring cuts. Mark cuts with a grease pencil or china marker.



Make straight cuts using tile cutter or wet saw. Notched or curved cuts and v-cap or quarter round tile cuts require a wet saw.



For unique shaping, use tile nippers to cut away small pieces of tile.

BASIC TOOLS FOR CUTTING TILE

Wet Saws

For precise cuts on stone and large tile.



Tile Cutters

For straight scoring and cutting of tile.



Tile Nippers

For breaking away small pieces and edges of tile.



2 SET

ELIGIBLE FOR
LIFETIME
WARRANTY

2ND STEP
to a
Lifetime
Warranty

SETTING THE TILE OR STONE

Creating a strong bond is an essential part of tile installation.



For Porcelain & Ceramic Tile



**FlexBond®
Fortified Thin-Set
Mortar**



**MegaLite®
Crack Prevention
Mortar**



For Stone — Marble, Granite, Slate & Travertine



**Marble & Granite
Fortified Premium
Mortar**



**MegaLite®
Crack Prevention
Mortar**



Clean surface of contaminants.



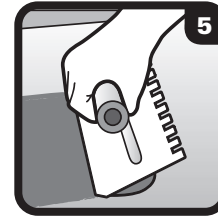
Add cool water.



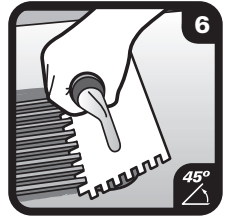
Add mortar.



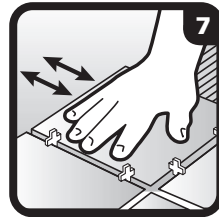
Mix 5 minutes.



Spread mortar on surface.



Apply mortar .93 m²
(10 sq. ft.) at a time.



Set tile into place.



Wipe with damp sponge.



Wait 24 hours before using surface.

COVERAGE

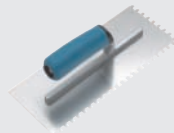
TILE / STONE SIZE	SQUARE-NOTCH TROWEL SIZE	COVERAGE
Up to 20 cm (8")	6 x 6 x 6 mm (1/4" x 1/4" x 1/4")	8 (90)
20 - 30 cm (8" - 12")	6 x 10 x 6 mm (1/4" x 3/8" x 1/4")	5.6 (60)
30 cm (12") and larger	13 x 13 x 13 mm (1/2" x 1/2" x 1/2")	4 (45)
		M² PER BAG (SQ. FT. PER BAG)

All Custom® thin-set mortars provide approximately the same coverage per 22,68 kg (50 lb.) bag.

Use white thin-set mortars with white, translucent tile or light colored grout. Otherwise use gray thin-set mortars.

BASIC TOOLS FOR SETTING

Notch
Trowel



Margin
Trowel



Tile
Nippers



Tile
Spacers



Grout
Sponge



3 GROUT

ELIGIBLE FOR
LIFETIME
WARRANTY

3RD STEP
to a
Lifetime
Warranty

GROUTING THE TILE JOINTS

#1 NORTH AMERICA'S GROUT

Polyblend® Grouts produce hard, durable grout joints and are easy to use, just add water and mix.



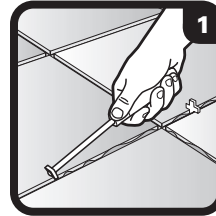
For Grout Joints

MIN MAX
3MM - 13MM
(1/8" - 1/2")

+ **+**



Polyblend®
Sanded Grout



1 Clean grout joints.



2 Add cool water.



3 Add grout.

For Grout Joints

MAX
3MM
(1/8")

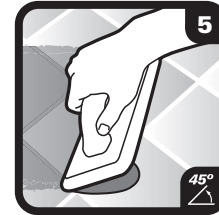
+



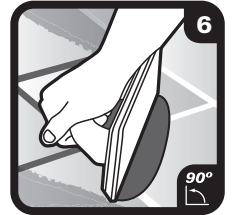
Polyblend®
Non-Sanded Grout



4 Mix 5 minutes.



5 Apply grout with float.



6 Remove excess grout
from surface.

COVERAGE

How much grout do I need

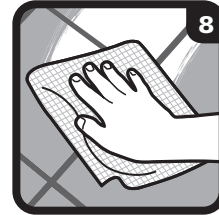
PROJECT SIZE	TILE SIZE	POLYBLEND SANDED NUMBER OF 11.34 KG (25 LB.) BAGS	POLYBLEND NON-SANDED NUMBER OF 4.53 KG (10 LB.) BOXES
4.6 m ² (50 Sq. Ft.)	Up to 60 cm (24")	1	1
9.2 m ² (100 Sq. Ft.)	Up to 15 cm (6")	1	2
18.6 m ² (200 Sq. Ft.)	15 - 60 cm (6" - 24")	1	1
	Up to 20 cm (8")	2	2
	25 - 40 cm (10" - 16")	2	2
	45 - 60 cm (18" - 24")	1	1

Coverage applicable for grout joint widths 3 mm (1/8") to 6 mm (1/4") for Sanded Grout; 1.5 mm (1/16") to 1.3 mm (1/8") for Non-Sanded Grout. Amounts rounded to ensure proper coverage.

Choose from 48 colors to complement your installation.



7 Wait for firm joints
Lightly clean off excess
grout with sponge.
CAUTION:
Do Not Over Water.



8 Remove haze with
cheesecloth.



9 Wait 16 hours before
using surface.

BASIC TOOLS FOR GROUTING

Grout
Float



Margin
Trowel



Grout
Sponge



Cheesecloth



Lifetime Warranty — It's as easy as 1 2 3!

ELIGIBLE FOR
LIFETIME
WARRANTY

3 STEPS
to a
Lifetime
Warranty

LIFETIME WARRANTY CHECKLIST

Here's your easy checklist to be sure you have all the right materials for your project. Just save the receipts of the materials purchased!
Register Your Warranty at www.custombuildingproducts.com

MY PROJECT SPECS

TILE / STONE SIZE	GROUT JOINT SIZE	JOB SIZE (IN SQ. FT.)

1 PREP

For coverage see page 2 - 3

For Concrete

- RedGard® Waterproofing and Crack Prevention Membrane
_____ Number of Pails

For Floors & Countertops

- WonderBoard® or EasyBoard® Backerboards
_____ Number of Boards
- EasyMat™ with SoundGard® Technology *where available*
_____ Number of Rolls

For Walls & Showers

- WonderBoard® or EasyBoard® Backerboards
_____ Number of Boards

2 SET

For coverage see page 5

For Porcelain & Ceramic Tile

- FlexBond® Fortified Thin-Set Mortar
_____ Number of Bags
- MegaLite® Crack Prevention Mortar
_____ Number of Bags

For Stone — Marble, Granite, Slate & Travertine

- Marble & Granite Fortified Premium Mortar
_____ Number of Bags
- MegaLite® Crack Prevention Mortar
_____ Number of Bags

3 GROUT

For coverage see page 7

For Grout Joints 3-13 mm (1/8" to 1/2") Wide

- Polyblend® Sanded
_____ Number of Bags / Boxes

For Grout Joints up to 3 mm (1/8") Wide

- Polyblend® Non-Sanded Grout
_____ Number of Boxes

ALSO RECOMMENDED

For Sealing

- SurfaceGard® Penetrating Sealer



BASIC TOOLS FOR SURFACE PREP

- Notch Trowel
- Knee Pads
- Scoring Knife
- Backerboard Screws
- Utility Knife

BASIC TOOLS FOR SETTING

- Notch Trowel
- Tile Spacers
- Tile Nippers
- Margin Trowel
- Grout Sponge

BASIC TOOLS FOR GROUTING

- Grout Float
- Margin Trowel
- Grout Sponge
- Cheesecloth